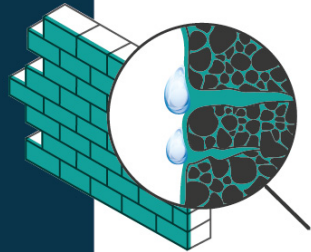
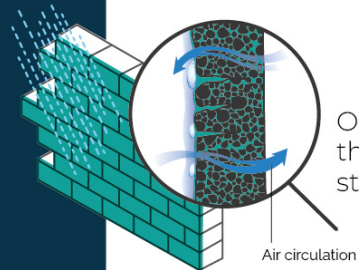




We are ready for the future with our **Biobased** Products!



Our products penetrate into the smallest pores and prevent damage caused by moisture



Our bio organic products penetrate the pores but makes air permeability still possible.

- **Website:** www.logicchemie.com
- **Phone:** +31 (0) 626354489
+31 (0)164-210887
- **Address:** Kastanjelaan 157a 4621 HL
Bergen op Zoom Logic Chemie head office



LOGIC INSULATION



Get the best from us.
Be inspired with our innovation.

BioBASED
PRODUCT



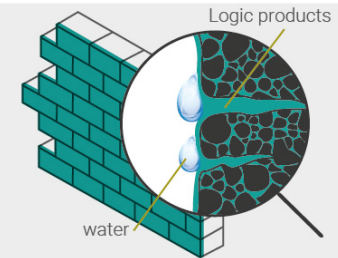
About LOGIC CHEMIE

As a company based in the Netherlands; We serve 22 countries, mainly in Europe and Middle Eastern countries.

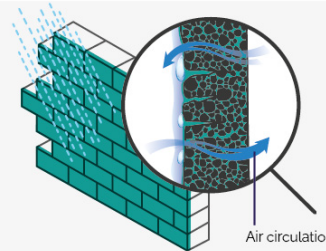
We are experts in pores. With our air permeable organic products it is possible to penetrate the pores in any desired depth. Our technology is developing day by day.

Our products are bio-based and guaranteed for 20 years. In addition, we create healthy living environments. Our products are water-repellent, but permeable to air. In this way it is possible to let the air circulation continue.

We protect your construction from the start and insulate in the best way.



Pores
All building materials have pores. Some pores are smaller and some pores are bigger. It takes to be a specialist to fill and protect the pores. This makes a difference in the end-result.



Air permeable but water repellent
To have a proper insulation it is important that the building material can breathe. This way we create a health living environment and contribute to an extending the lifespan.



Biobased
Logic Chemie stands for sustainability. For this reason we use and develop products that are as biobased as possible. No harm to humans, animals and nature. Smaller than Nano: The world knows Nano-technology as something small with long resistance. We developed a technology that is a 1000 times smaller than Nano. It is called Pico-technology.



20 years warranty
We believe in our products and the quality we guarantee. All of the above, results in a long lasting insulation.

LOGIC Products

Insulation is the main protection of constructions, as Logic Chemie we protect and take care of buildings and infrastructures with quality while keeping our ecological footprint as small as possible.

The special technology makes sure that we have the best bonding of our materials with the treated surfaces.



WATER PROBLEMS IN BUILDINGS

PROTECTION OF HISTORIC BUILDINGS

FOUNDATION INSULATION

WATER PROBLEMS IN BUILDINGS HISTORIC BUILDINGS

Home	Tunnel	Bridge	Land	Barrier
Roof Wall Floor Basement Elevator CE Joints water piping Gaps Embrasure	Roof Wall Floor Basement Elevator CE Joints Gaps Embrasure	Roof Wall Floor Basement CE Joints Gaps Embrasure	Floor CE Joints Gaps Embrasure	Wall Floor CE Joints Gaps

FOUNDATION INSULATION

Home	Tunnel	Bridge	Land	Barrier
Roof Wall Floor Basement Elevator CE Joints water piping Gaps Embrasure	Roof Wall Floor Basement Elevator CE Joints Gaps Embrasure	Roof Wall Floor Basement CE Joints Gaps Embrasure	Floor CE Joints Gaps Embrasure	Wall Floor CE Joints Gaps

CE Joints : Concrete Expansion Joints

Logic Water



- Home
- Tunnel
- Bridge

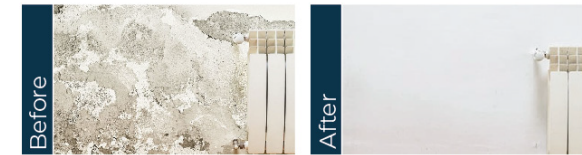
- Wall
- Basement ground floor
- Floor

Problems:

1. Moisture
2. Damp walls
3. Capillary water

How does it work:

When applied, the product penetrates to a deep point into the pores of the surface after which it nests. Logic Water pushes the (moisture) water out of the treated surface within 8-12 weeks. The (moisture) water then evaporates and the surface drying process begins. The product then protects for a minimum of 20 years.



Content Logic Water: Paraffin, Polymer

Logic EX

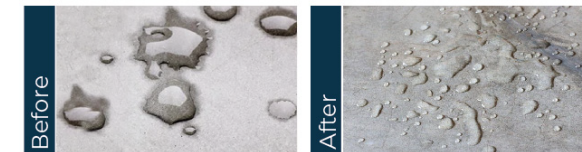


- Home
- Tunnel
- Bridge
- Land
- Barrier

- Roof
- Wall
- Floor
- Basement

Where can it be applied?

- Facades to protect against moisture from (rain) water
- Various types of stone (ceramics, tiles, marble, natural stone, brick, ytong)



After treatment, the surface is water-repellent and air-permeable. The coating is invisible with the eye and does not change appearance of the surface. In addition, the surface is resistant to natural pollutants does not change the appearance such as mud and mosses / algae
Logic Ex is more practical, stronger and more durable than other facade insulation methods
The long-term effect of Logic Ex makes it possible to save 35% on energy costs.



Content Logic Ex: Paraffin, Polymer

LOGIC Products



Logic UW

- Home
- Tunnel
- Bridge
- Land
- Barrier

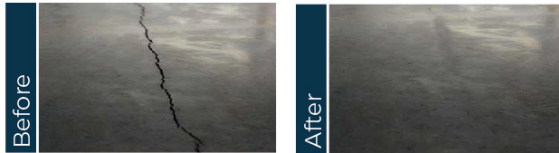
- Roof
- Wall
- Floor
- Basement
- Elevator
- Concrete Expansion Joints

Where can it be applied?

- (Capillary) Cracks in the wall
- (Capillary) Cracks in the ceiling
- Joints between wall and floor
- Tunnel and parking garage
- Elevator spaces/mechanical

The technical composition of the Logic UW makes it possible to fill in the most minimal cracks. The treated surface has no inflating effect. In addition, the application can take place on wet surfaces.

Content Logic UW: resin, bisphenol A-B, hydrolysis: ethanol



Logic UW Flex

- Home
- Tunnel
- Bridge
- Land
- Barrier

- Roof
- Wall
- Floor
- Basement
- Elevator
- Concrete Expansion Joints

Where can it be applied?

- In movable spaces such as:
- Tunnels
 - Stadiums (joints)
 - Bridges
 - Dilatations
 - Cracks around columns
 - Infrastructure

Logic UW Flex has a better capacity to absorb movements to prevent cracking. The technical composition of the Logic UW makes it possible to fill in the most minimal cracks. The treated surface has no inflating effect. In addition, the application can take place on wet surfaces.

Content Logic UW: resin, bisphenol A-B, hydrolysis: ethanol



Logic UH



- Home
- Tunnel
- Bridge
- Land
- Barrier

- Roof
- Wall
- Floor
- Basement
- Elevator
- Concrete Expansion Joints
- water piping
- Gaps
- Embrasure

Where can it be applied?

- Foundation
- Column
- Roof top
- Loophole edges and dilatation

Logic UH; Is a product containing epoxy resin that is mixed with sand. This mixture does not contain any type of polyurethane or (PU) foam. Logic UH forms a sealing zone for surface cracks and joints, grating edges, cold joints and dilatation zones. Because of the Logic Chemie technology the mixture penetrates well and creates an extremely strong bond with repair and sealing surfaces. Does not dissolve in water and does not harm drinking water after being cured. Can be used as repair mortar for porous buildings.

Content Logic UH: resin, bisphenol A-B, hydrolysis: ethanol



Logic UH Flex

- Home
- Tunnel
- Bridge
- Land
- Barrier

- Roof
- Wall
- Floor
- Basement
- Elevator
- Concrete Expansion Joints
- water piping
- Gaps
- Embrasure

Where can it be applied?

- Roofs and terraces
- Foundations
- Pool insulation
- Soil insulation (also on wet surfaces)
- Spaces where there is (pressure) water
- Water tanks

The Logic UH Flex is most suitable for surfaces where there is a need for absorbing movements. The Logic UH Flex has protective and reinforcing effect. After the Logic UH Flex has been applied, the service life of the material is extended. In this way it contributes to circularity.

Content Logic UH Flex: resin, bisphenol A, bisphenol B, hydrolysis: ethanol



Logic DP

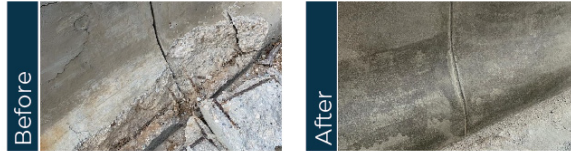


Home
Tunnel
Bridge
Land
Barrier

Roof
The Foundation Structure
Floor Ground

Where can it be applied?

1. Foundation floor
2. Wet areas such as kitchen, Bathroom, Swimming pool
3. Rooftops
4. Infrastructure
5. Water/Liquid tanks



The technical composition of **Logic DP** makes it possible to penetrate the surface up to 30 millimetres. The product forms a strong bond and surface sealing. Once nested, **Logic DP** protective layer forms in the concrete with a reinforcing effect. Logic DP is an impregnation method which protects by penetrating the concrete. Once applied, Logic DP makes concrete 20 times stronger.

Technical composition protects concrete against agents such as water, mineral oil, solvents, acids, salt, combustion gasses, and pressure.

Prevents the damages of various underground bacteria and liquid species Due to the Logic Chemie technology, Logic DP and is stronger than Membrane choices, practical and longer life solutions. Suitable for the beams/columns, foundation and base of a building and comes with a warranty of at least 20 years.

Logic DP is a colourless coating and not solvable in water. Does not affect drinking water after the coating is cured. If a colour coating is wished we recommend the Logic DS.



20
years
WARRANTY

Content Logic DP: epoxy resin, bisphenol base, butanone, glycol, xylene



Logic DS

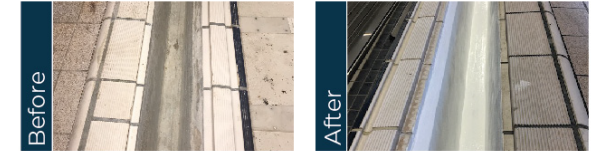


Home
Tunnel
Bridge
Land
Barrier

Roof
The Foundation Structure
Floor Ground

Where can it be applied?

1. Foundation floor
2. Wet areas such as kitchen, bathroom, swimming pool
3. Rooftops
4. Infrastructure
5. Water depots
6. Chemical tanks



LOGIC-DS two-component plastic invisible on concrete and water vapour diffusion proof. The product is resistant against more than 1.400 chemicals and other similar liquids.

The technical composition protects concrete and steel against agents such as water, mineral oil, solvents, acids, salt, combustion gasses, and pressure. Especially when used with Logic DP, the adhesion force is extremely strong. The impermeable layer they form provides the surface to last longer.

Areas that are continuously exposed to water can be coated with Logic DS. It is suitable for concrete surfaces bathroom, kitchen, terrace, balcony and so on..

After the use of Logic DS, these areas are prevented from absorbing water and leakages to the lower floors.

The LOGIC-DS coating is available in any colour by RAL code. A warranty of at least 10 years



20
years
WARRANTY

Content Logic DS: epoxy resin, bisphenol base, butanone,



International References



Prinsengracht
Amsterdam – The Netherlands



Kremlin Paleis
Moskou – Russia



Hermitage Museum
St. Petersburg – Russia



Saracane
Istanbul – Turkey



Karhaus Wiesbaden
Germany



Grand Bazaar
Istanbul – Turkey



Fatih Terim Stadion
Istanbul – Turkey



Subways and tunnels
-in many countries



Ports
-in many countries



Airports
-in many countries



Bridges
-in many countries



Barrage and Dams
-in many countries

Turkey References

Our office in Turkey works with the same Logic Chemie standards and helps with improving our technology.
The multiple references give you an insight of our Logic World and possibilities.



IBB SARAÇHANE BİNASI



VAHDETTİN KÖŞKÜ



IBB LOJİSTİK DESTEK BİNASI



BAŞAKŞEHİR FATİH TERİM
STADYMU



ADANA BÜYÜKŞEHİR
BELEDİYE



İBB KASIMPAŞA
EK HİZMET BİNASI



İBB BAKIRKÖY
EK HİZMET BİNASI



HİLYE-İ ŞERİF
TESBİH MÜZESİ



BALAT ST. STEPHAN
BULGAR KİLİSESİ



KARTAL HASAN DOĞAN
SPOR KOMPLEKSİ



FATİH İTFAİYE
MERKEZİ



DR. ENVER ÖREN
KÜLTÜR MERKEZİ

Turkey References

TURKEY



Harbiye Muhsin Ertuğrul Stage



Kabataş High School



Beşiktaş ferry terminal



Kartal Imam Hatip High School



Sarıyer cultural center



Sancaktepe ismek and isadem



AKOM Coordination Center



İSTON A.Ş Concrete Plant



Bağcılar women and family culture and art center



Hidayet Türkoğlu sports complex



İBB Kudeb



Theater Musahipzade Celal Stage



Maçka Democracy Park



Eyüpsultan Vatan Anatolian High School



Car dealer Otomol Zeytinburnu



Eminönü Square



Beyoğlu Center for the Disabled



Avcılar Central Mosque



Dudullu Sports Facilities



Ümraniye Scene Theater



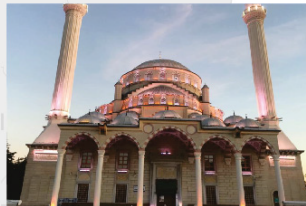
Üsküdar Municipality Wedding Palace



Istanbul Metropolitan Municipality Woman Coordination Center



Ali Emiri Efendi Cultural Center



Florya New Mosque



Kadıköy Pier

And many more..
Contact us for more information about products, projects or other possibilities.



Future with LOGIC CHEMIE

WE STAND FOR QUALITY, INNOVATION AND SUSTAINABILITY