

**LOGIC
CHEMIE** 



LOGIC STRENGTHENING

We are Ready for the Future with Our Organic Products...

www.logicchemie.com

ABOUT US



In 1967, our Professor; Considering environmental friendliness, he wanted to produce a product that prevents the absorption and clogging of the pores in building materials caused by water (rain), and this is how our story began.

We have opened up to the world with our products that can solve all water-related problems in a short time and our years of experience.

As a company currently based in the Netherlands; We provide service in 22 countries, especially in Europe and the Middle East, with our organic products with at least a 20-year warranty.

We are progressing by improving our new technology day by day. We can enter and penetrate the pores to the desired size. In this way, we repair, strengthen, protect, clean and disinfect pores.

OUR MISSION

Logic Chemie works with biobased technologies. Our products and services do not harm the environment or people and are long-lasting. Cultural heritage, monuments, museums, bridges, roads, your homes and office buildings must be protected in a result-oriented manner. We believe in maintaining high standards of safety for not only our team, but everyone we work with. People at Logic Chemie apply and maintain these standards all over the world.



OUR VISION

Our vision is to grow our company. At the same time, we want to contribute to reducing the environmental footprint and increase social impact. Our building products are produced as biobased and as environmentally friendly as possible. We invest in technology to constantly improve our products. Our main goal is to protect people, the environment and animals.

We believe that we will be successful and sustainable by following this path.

WE ARE READY FOR THE FUTURE WITH OUR BIO ORGANIC PRODUCTS.

As a Netherlands Based Company;

We provide service in 22 countries, especially European and Middle Eastern countries.

We are Pore Experts; With our air-permeable, organic products, we can enter and penetrate the pores to the desired size. We are progressing by improving our new technology day by day.

All our products are organic.

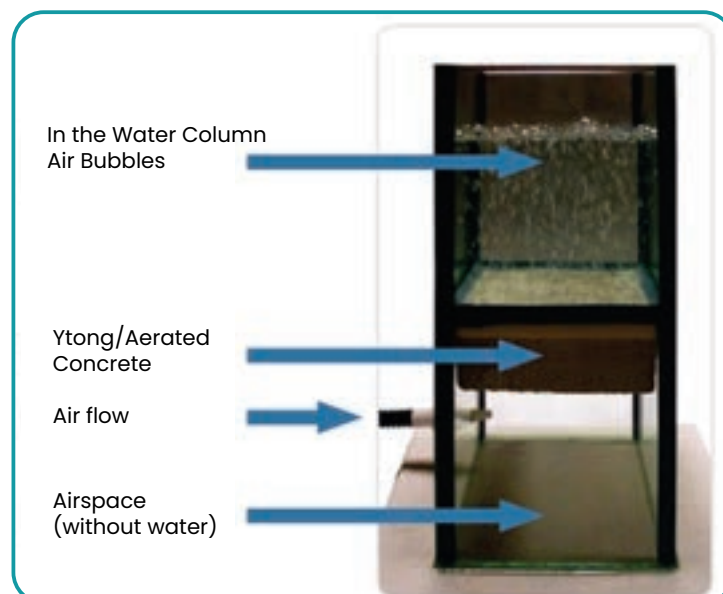
Our products have a 20 Year Warranty.

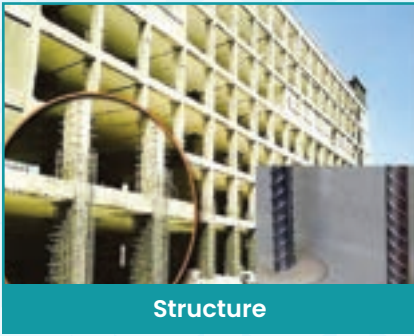
Our products are waterproof but air permeable. In this way, air circulation continues in your buildings. Concrete, Iron, All Stone Types (Marble, Granite, Brick, Natural Stone...), Wood, Ceramics and Acrylic;

- 1- We repair
- 2- We strengthen
- 3- We protect
- 4- We clean
- 5- We disinfect.



Our vision; To enter every corner of every country in the world. We would like to see you in our company, which constantly improves and renews itself and directs technology in its field, and we invite you to this door that opens to the world.





Structure



Historical building



Infrastructure

We are pore experts and we can enter the pores to any depth we want.

We strengthen damaged or deformed columns and beams in existing and historical buildings.

We repair the damages in old and unused buildings, strengthen them with our products and put them into use.

We increase the strength of floors in airports, ports, industrial and industrial areas. We strengthen the infrastructure and superstructure elements.

Our products are organic and smaller than nano technology. We give at least a 10-year warranty to our applications.

Structure, Historical structure and Infrastructure

LOGIC UW



Where to use?

- In cold joints
- Curtains in tunnels and basements in the cracks
- In cracks in reinforced concrete (wall, ceiling, floor)
- In elevator shafts
- In structures where pressurized water comes

It fills even the smallest hairline cracks in reinforced concrete cracks. It does not cause swelling where applied. It can be used while water is coming.

Ingredients: Resin.Bisphenol A-B. Hydrolysis: ethanol



Before



After

LOGIC UW FLEX



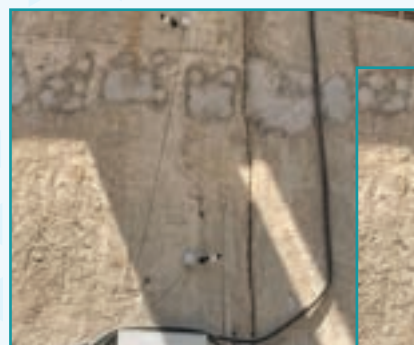
In Which Problems Is It Used?

Must have a lot of stretching and play; In the tunnels

- In the stands of stadiums (joints, precast concrete breaks, dilatations)
- Bridges
- In dilatations
- Column and beam cracks
- In infrastructure and superstructure elements

Logic is more flexible than UW. It is used in places where there is a lot of stretching and play. It enters even the smallest capillary crack. It does not cause swelling or overflow. It is suitable for use when water is coming.

Ingredients: Resin.Bisphenol A,B. Hydrolysis: ethanol



Before



After

LOGIC UH



Where to use?

- In cold joints
- In dilations
- Around grates, strainers and drains
- On mechanical pipe edges
- For cracks, openings and gaps larger than cracks

It is applied as a filler by mixing it with fine joint sand, binding it to the mold, and insulating it in the form of a set where it is applied.

Ingredients: Resin.Bisphenol A.Bisphenol B.Hydrolysis: ethanol



LOGIC UH FLEX



Where to use?

- Reinforced concrete surfaces of roofs and terraces
- Building foundations
- Under ceramics in pool insulation
- Insulation of wet areas
- On surfaces coming from pressurized water
- In water tanks

It is an insulation and protection method that penetrates pores up to 3 mm in the form of impregnation in the area where it is applied and does not leave a layer on the surface.

Ingredients: Resin.Bisphenol A. Bisphenol B.Hydrolysis: ethanol



LOGIC DP



Where to use?

- Strength of concrete in building foundations to gain
- To strengthen old concrete
- To increase the strength of the existing concrete surface
- Protecting and strengthening airport runways.
- Infrastructure and superstructure reinforcement.

It is a protection and reinforcement system that penetrates the concrete up to 3 mm on the applied surface and adds strength to the concrete.

Ingredients: Epoxy resin.Bisphenol base. Butanone. Glycol.Xylene



LOGIC DS



Where to use?

- In old, destroyed and deformed concretes
- To increase the strength of the existing surface
- Protecting and strengthening airport runways
- Protection and reinforcement of parking lot floors

It penetrates approximately half of 3 mm in the area where it is applied. remains on the surface for color. It provides strength to the surface and can be in any color.

Ingredients: Epoxy resin.Bisphenol base. Butanone Glycol.Xylene.Paint




- Is there moisture in your walls?
- Are you in trouble with mold?
- Is your roof leaking water?
- Have cracks appeared in your building?
- Is water leaking from the tiles in your bathroom?
- Do you want to clean your tiles more easily and prevent them from scratching?
- Do you want to remove all kinds of paint without any problems?
- Want to get rid of rust?



**If you answer "YES" to these questions,
you are in the right place!**

 Address: Kastanjelaan 157a 4621 HL
Bergen op Zoom Logic Chemie head office

 Phone:
+31 (0) 626354489
+31 (0)164-210887

 www.logicchemie.com

 E-mail: info@logicchemie.nl



**100 YEARS UNDER WATER
EVEN IF THEY STAYED
MOISTURE AND HUMIDITY ON THE WALL
WE DRY**