



**LOGIC
CHEMIE** 

***LOGIC
STRUCTURE
REPAIR-
PROTECTION***

**We are Ready for the Future
with Our Organic Products...**

www.logicchemie.com



ABOUT US



In 1967, our Professor; Considering environmental friendliness, he wanted to produce a product that prevents the absorption and clogging of the pores in building materials caused by water (rain), and this is how our story began.

We have opened up to the world with our products that can solve all water-related problems in a short time and our years of experience.

As a company currently based in the Netherlands; We provide service in 22 countries, especially in Europe and the Middle East, with our organic products with at least a 20-year warranty.

We are progressing by improving our new technology day by day. We can enter and penetrate the pores to the desired size. In this way, we repair, strengthen, protect, clean and disinfect pores.

OUR MISSION

Logic Chemie works with biobased technologies. Our products and services do not harm the environment or people and are long-lasting. Cultural heritage, monuments, museums, bridges, roads, your homes and office buildings must be protected in a result-oriented manner. We believe in maintaining high standards of safety for not only our team, but everyone we work with. People at Logic Chemie apply and maintain these standards all over the world.



OUR VISION

Our vision is to grow our company. At the same time, we want to contribute to reducing the environmental footprint and increase social impact. Our building products are produced as biobased and as environmentally friendly as possible. We invest in technology to constantly improve our products. Our main goal is to protect people, the environment and animals.

We believe that we will be successful and sustainable by following this path.

WE ARE READY FOR THE FUTURE WITH OUR BIO ORGANIC PRODUCTS.

As a Netherlands Based Company;

We provide service in 22 countries, especially European and Middle Eastern countries.

We are Pore Experts; With our air-permeable, organic products, we can enter and penetrate the pores to the desired size. We are progressing by improving our new technology day by day.

All our products are organic.

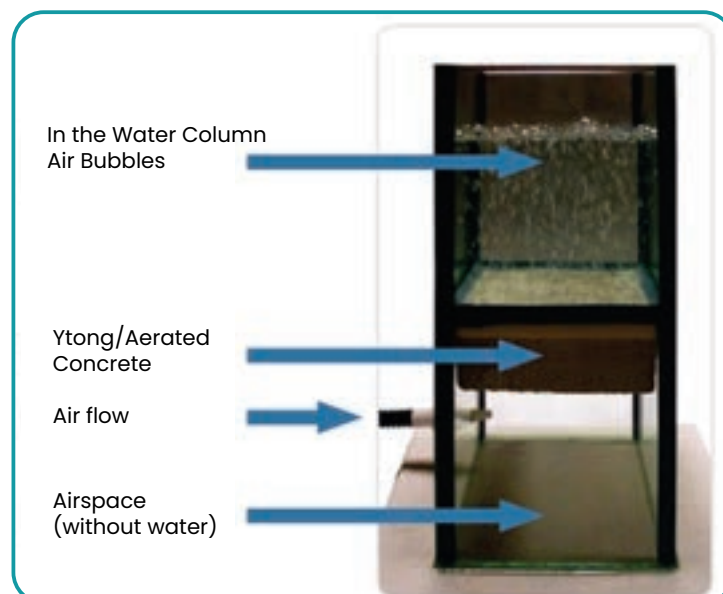
Our products have a 20 Year Warranty.

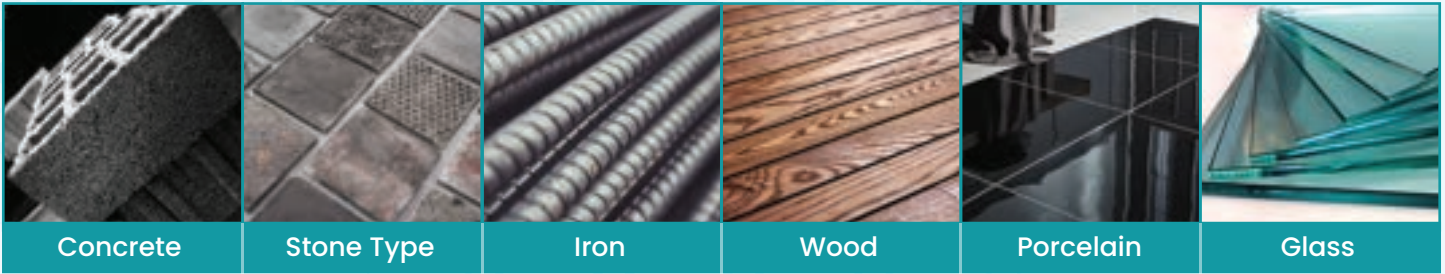
Our products are waterproof but air permeable. In this way, air circulation continues in your buildings. Concrete, Iron, All Stone Types (Marble, Granite, Brick, Natural Stone...), Wood, Ceramics and Acrylic;

- 1- We repair
- 2- We strengthen
- 3- We protect
- 4- We clean
- 5- We disinfect.



Our vision; To enter every corner of every country in the world. We would like to see you in our company, which constantly improves and renews itself and directs technology in its field, and we invite you to this door that opens to the world.





We are pore experts and we can enter the pores to any depth we want. We repair cracks, destruction and deformations in existing structures, and protect all types of floors, wood, iron and glass from water and dirt. We protect brand new manufacturing against water, dirt and rust with our product application.

Our products are organic and smaller than nano technology. We provide at least a 10-year warranty on our protection applications.

Concrete and Stone Types

PROTECTION: LOGIC DS



Where to use?

- On roofs and terraces
- In water tanks
- In all building blocks
- Protecting chemical tanks
- Industrial floor protection and coating
- On the parking lot lobby and event hall floors
- On damaged, destroyed and deformed grounds



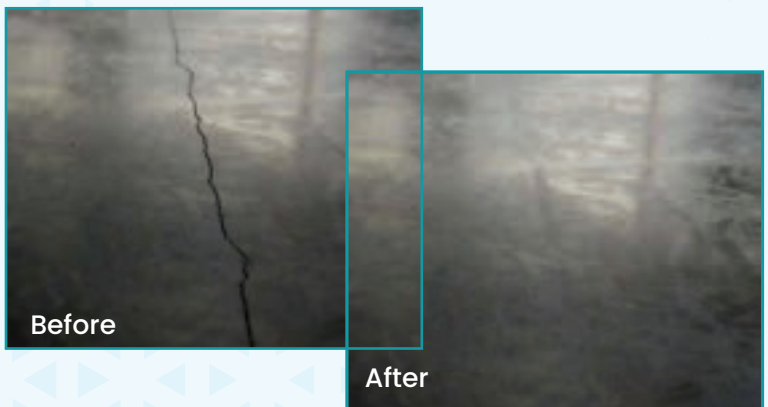
Ingredients: Epoxy resin, Bisphenol base. Butanone Glycol. Xylene.Paint

REPAIR: LOGIC UW



Where to use?

- In cold joints
- In curtain cracks in tunnels and basements
- In all cracks in reinforced concrete (wall, ceiling, floor)
- In elevator shafts
- In structures where water pressure comes



Ingredients: Resin.Bisphenol A-B.Hydrolysis: ethanol

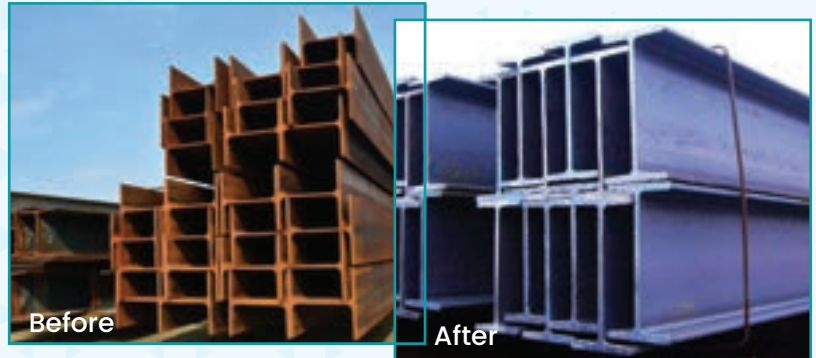
Iron

LOGIC DP+

Where to use?

- In chemical tanks
- Protecting iron bridges and railings
- In steel construction buildings and structures
- In sheet metal, iron and steel pipes

Ingredients: Epoxy resin, Zinc



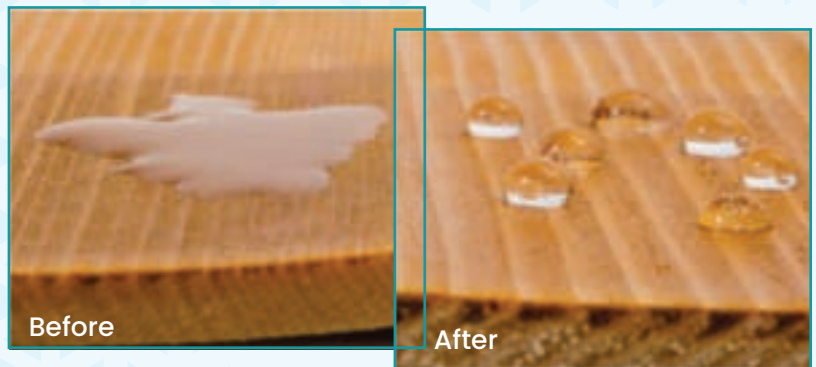
Wood

LOGIC WOOD

It protects the wood against water and allows air to pass through.

Where to use?

- In saunas
- In garden furniture
- Wooden tables and chairs
- In parks and benches
- On all wooden surfaces, indoor and outdoor on all surfaces



Porcelain

LOGIC S

It provides dirt resistance for at least 6 months on porcelain materials and porcelain surfaces.

Where to use?

- Bacteria and dirt problems in bathrooms
- Bacteria and dirt problems in the kitchen.
- Bacteria and dirt problems on the floor.



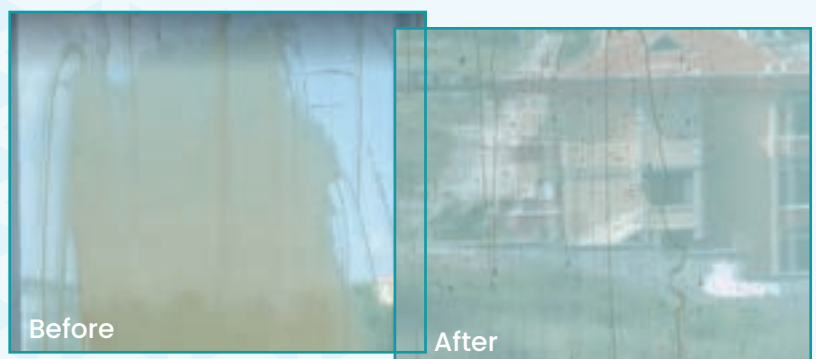
Glass

LOGIC GLASS

It is resistant to dirt on glass surfaces for an average of 3 months.

Where to use?

- In glass buildings
- In hotels
- In the plazas
- In banks
- Also from vehicle windows




Ingredients: Paraffine.n-Propanol

- Is there moisture in your walls?
- Are you in trouble with mold?
- Is your roof leaking water?
- Have cracks appeared in your building?
- Is water leaking from the tiles in your bathroom?
- Do you want to clean your tiles more easily and prevent them from scratching?
- Do you want to remove all kinds of paint without any problems?
- Want to get rid of rust?



**If you answer "YES" to these questions,
you are in the right place!**

 Address: Kastanjelaan 157a 4621 HL
Bergen op Zoom Logic Chemie head office

 Phone:
+31 (0) 626354489
+31 (0)164-210887

 www.logicchemie.com

 E-mail: info@logicchemie.nl



**100 YEARS UNDER WATER
EVEN IF THEY STAYED
MOISTURE AND HUMIDITY ON THE WALL
WE DRY**