



# Water Isolation

Historical Building

LOGIC  
CHEMIE

# What are the occurring problems with Historical buildings?

Water-related issues are common in historical buildings due to their age, construction materials, and often inadequate maintenance over the years. Some of the water problems occurring with historical buildings include:

1

Moisture Infiltration: Older buildings may have porous materials and degraded seals, allowing moisture to penetrate walls, floors, and ceilings.

2

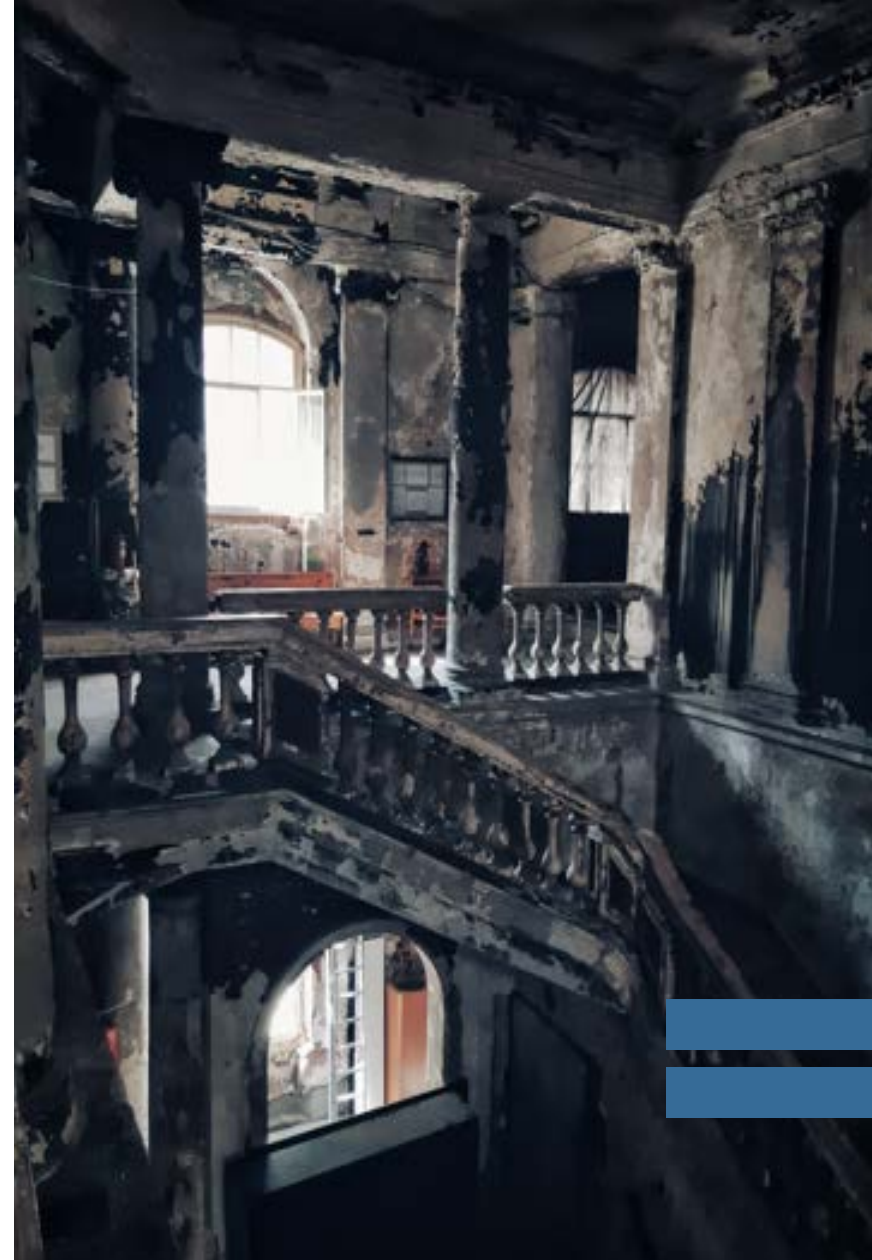
Rising Damp: Capillary action can draw moisture from the ground into the walls, causing rising dampness and subsequent damage to interior finishes.

3

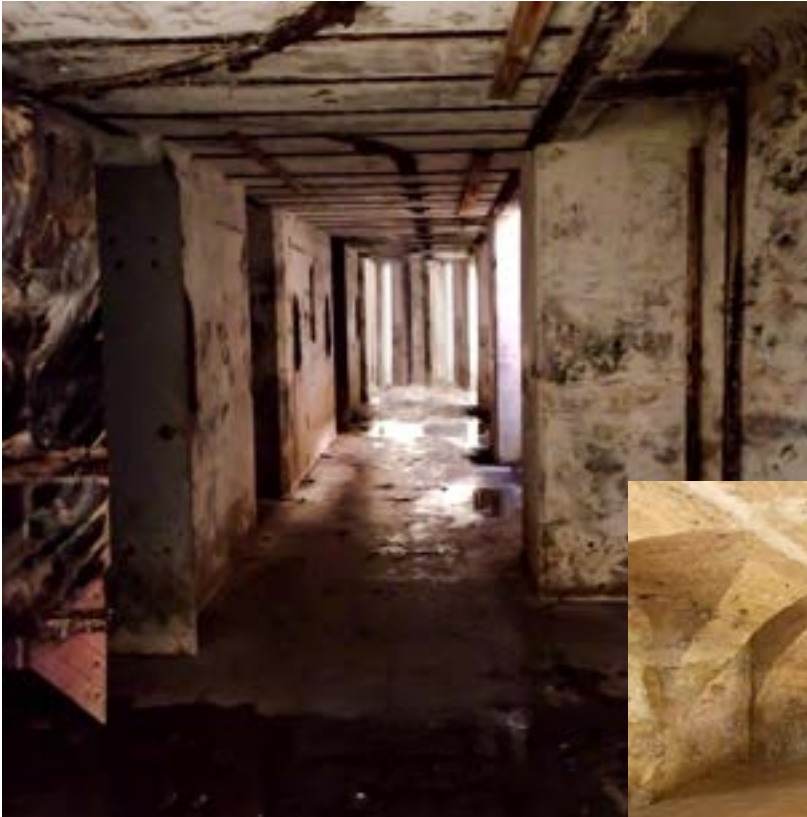
Roof Leaks: Aging roofs, damaged flashing, and deteriorating materials can lead to water infiltration, causing damage to ceilings, walls, and structural elements.

## What are the occurring problems with Historical buildings?

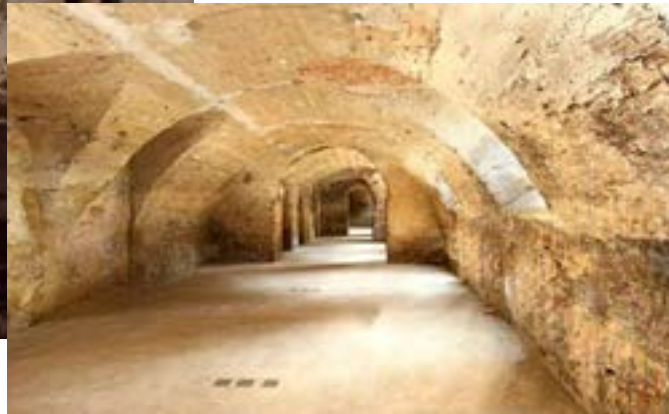
- 4 Condensation: Inadequate ventilation and insulation can lead to condensation buildup on interior surfaces, promoting mold growth and deterioration of building materials.
- 5 Plumbing Issues: Old plumbing systems may develop leaks over time, leading to water damage and potential structural problems.
- 6 Foundation Drainage: Poorly maintained or outdated drainage systems can result in water pooling around the foundation, leading to structural instability and deterioration.
- 7 Weathering: Exposure to harsh weather conditions, such as rain, snow, and freeze-thaw cycles, can accelerate deterioration of building materials, leading to water-related problems.



## Pressure water coming from the soil



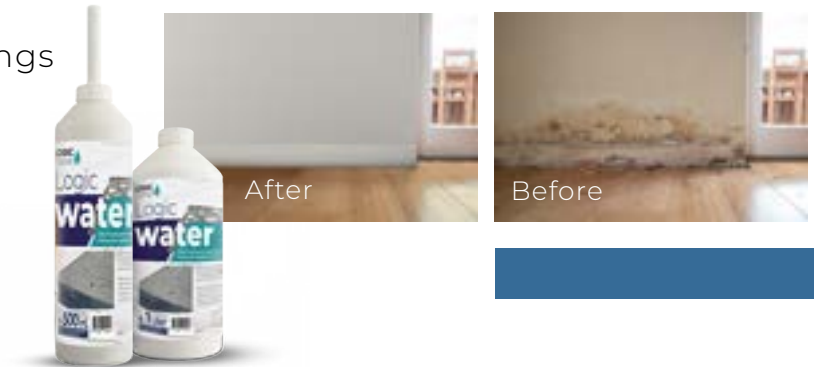
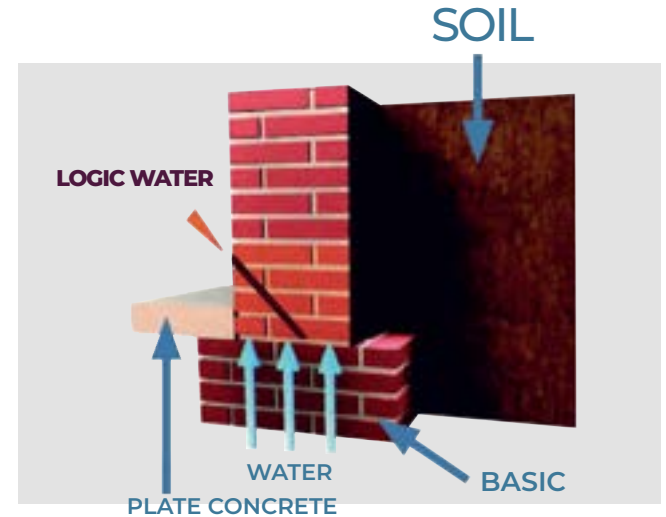
- Pressure water originating from the soil can be effectively managed with Logic Water.
- This water-repellent solution is formulated with paraffin, an oil-based product that is harmless to humans, animals, and the environment.





# Moisture and rising water control with **Logic Water**

- Logic Water is an injection method designed to expel moisture from concrete, allowing it to evaporate.
- It establishes insulation against incoming moisture and features a water-repellent yet air-permeable effect.
- This enables quicker drying of concrete and helps prevent concrete decay.
- Due to the vulnerability of monuments and historical buildings to water exposure, using pressure injection is not advisable. Therefore, we apply Logic Water using a bottle system to ensure a gentler and more controlled application process.



# Logic Water solutions

Colourless and odorless

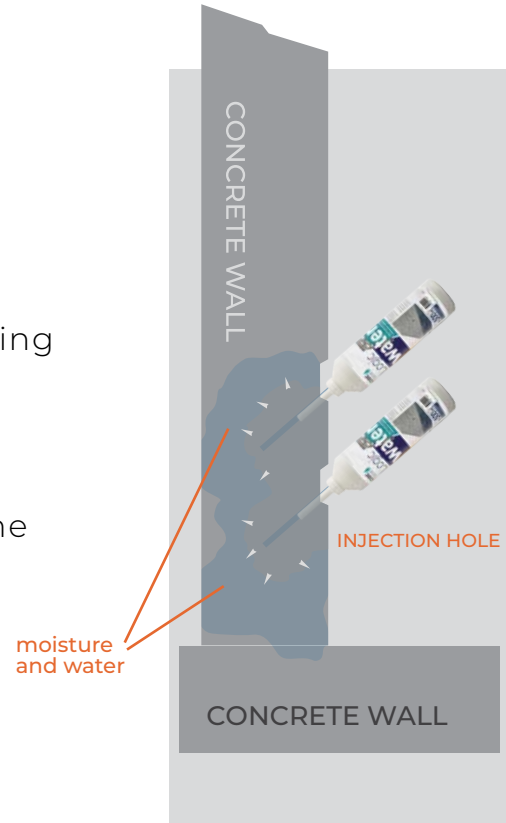
No harmful chemicals

Suitable and allowed to use in historical building materials

Waterrepellant but airpermiabile

The pores stay open for the building to breathe

Long-term protection of 20 years



# Repair and Reinforce

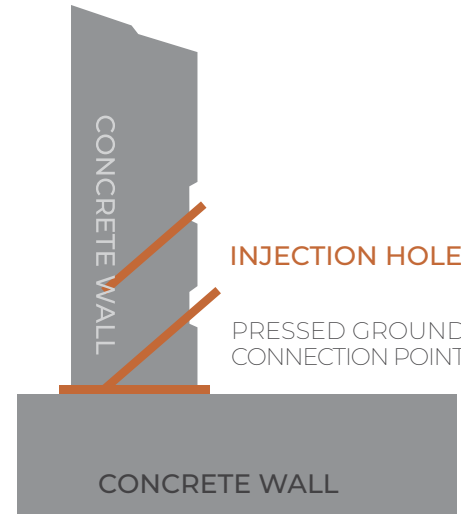
- When repairing cracks and openings in monuments, it's crucial to use products that exhibit optimal adhesion to weak and moist surfaces.
- Additionally, caution must be exercised with products that react to water, as they can potentially cause harm to the monument.
- It's advisable to avoid heavy chemicals and acids when working with monuments, as they can lead to unintended damage.



# LOGIC UW



- Logic UW is an epoxy resin-based product, free from foam polyurethane or any other additives.
- Leveraging Logic technology, it seamlessly spreads through pores and effectively repairs even the smallest capillary cracks.
- Furthermore, it does not dissolve in water, ensuring it does not pose harm if ingested. Additionally, it contains no harmful ingredients or dampness, making it suitable for use on porous surfaces.

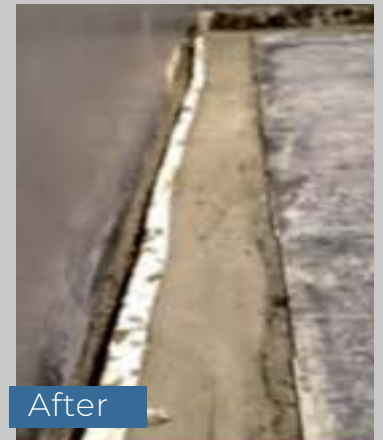
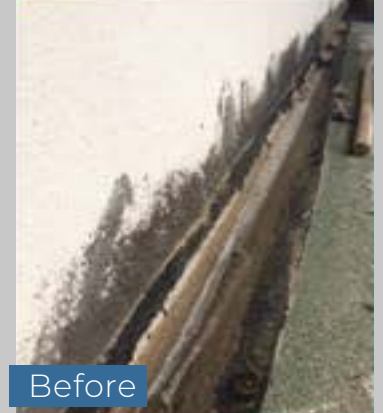




# LOGIC UH



- Logic UH is an epoxy resin-based product mixed with sand, free from foam or other additives. Utilizing Logic technology, it effortlessly spreads through pores and provides optimal adhesion to surfaces.
- It is primarily used for repairing and sealing purposes and is well-suited for joints, roofs, and construction beams.
- Moreover, it does not dissolve in water, ensuring it does not contaminate drinking water.
- Additionally, it contains no harmful ingredients or dampness, making it suitable for use as a repairing mortar with porous buildings.



# Protect

- Apart from pressure water from the soil, rainwater absorption into the facade is also a concern.
- Historical buildings often lack insulation, allowing water to penetrate for extended periods.
- This moisture weakens the building materials over time.
- After repairs, it is crucial to apply a protective and insulating coating.
- This coating must be breathable to allow moisture to escape while preventing further water ingress.
- Additionally, the coating should not contain heavy chemicals, acids, or other materials that could react with natural stones, limestone, and sand-based materials commonly found in historical buildings.



# LOGIC EX



After

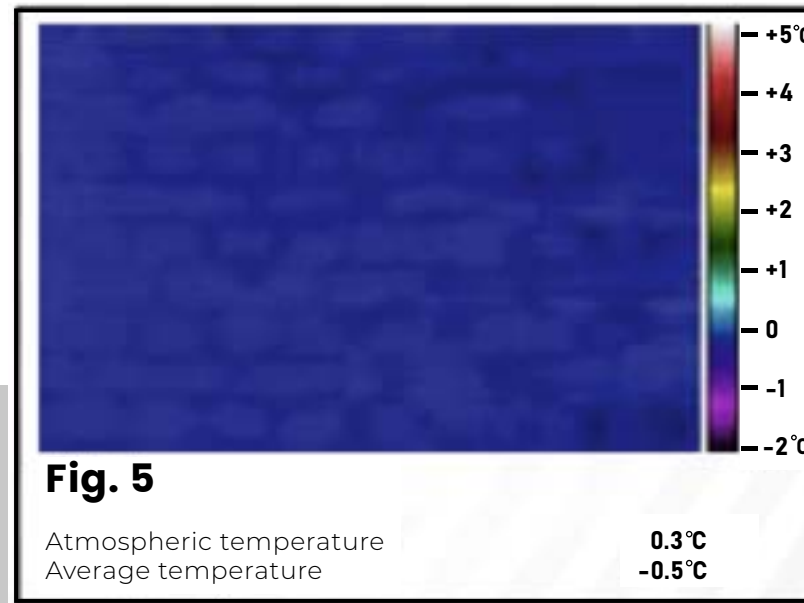
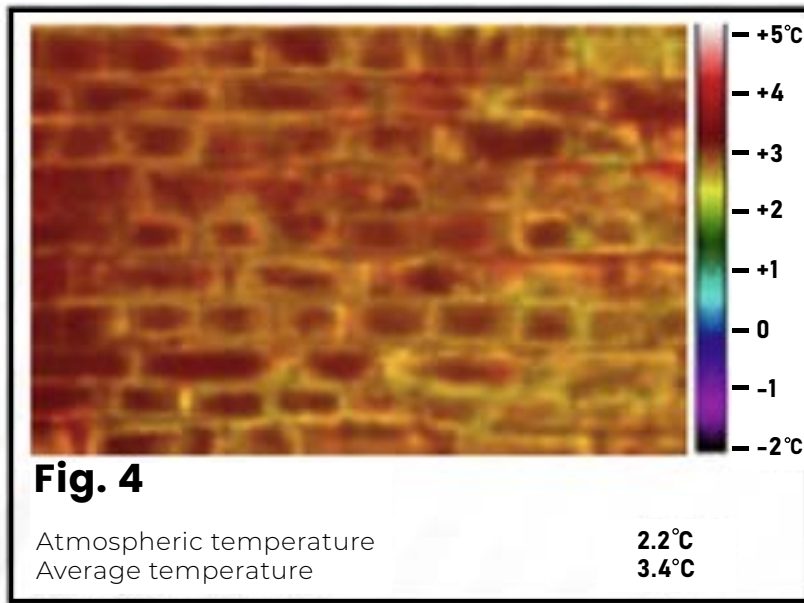


Before

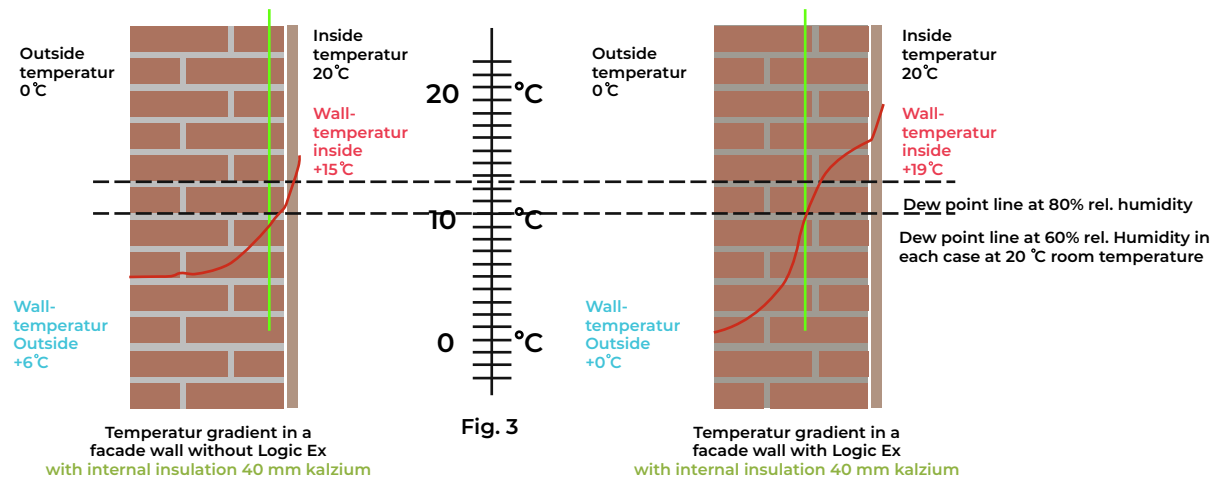
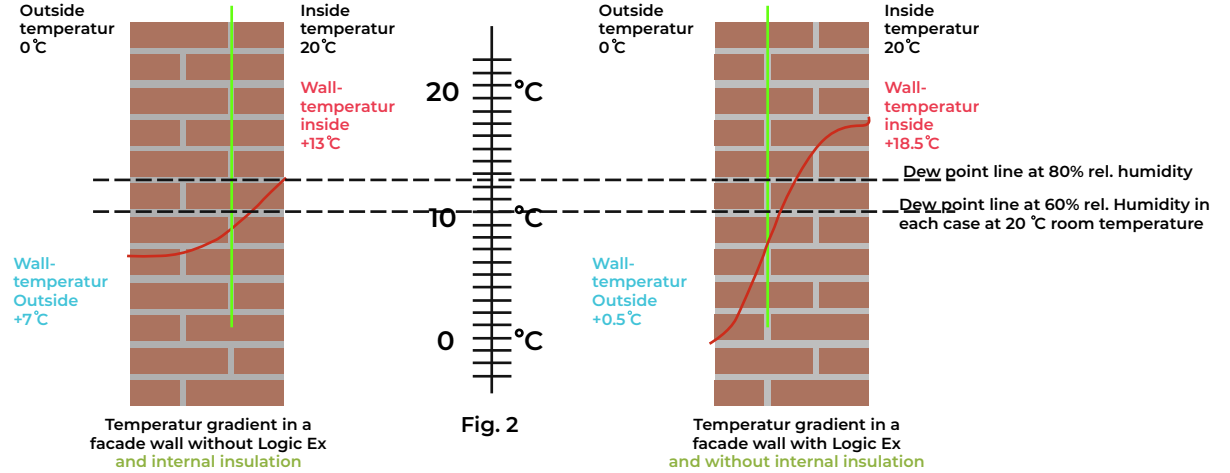


- Logic Ex: ideal for water-repellent treatment on exterior walls, floors, and rooftops.
- Colourless and Odorless
- Waterrepellant but airpermeable which makes it suitable and allowed for Historical Buildings
- Convenient application by spray or brush with quick drying time (three hours).
- Unique technical composition penetrates deeply, becoming invisible.
- Repels water and dirt while maintaining air circulation.
- Water beads on the surface, providing benefits to protect historical buildings.
- Prevents dirt and water from entering pores, keeping surfaces clean.
- Enjoy a healthy environment with up to 20 years of protection.

# Temperature differences after application with Logic Ex



# The best insulation





LOGIC  
CHEMIE

 Thank You