

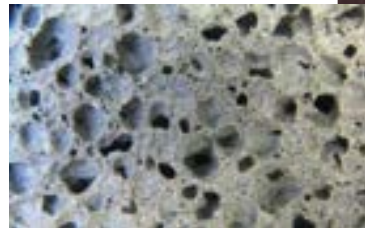
Hydrophobic Paint and Coatings

Concrete



What are hydrophobic coatings?

- Hydrophobic coatings repel water, making surfaces resistant to water absorption.
- Designed to cause water to bead up and roll off surfaces, preventing damage.
- Used to protect materials like glass, metal, and plastics from water damage, corrosion, and staining.
- Applicable to various surfaces including car windshields, windows, electronic devices, clothing, and footwear.
- Work by altering surface properties, creating a barrier that prevents water adhesion.



What is concrete?

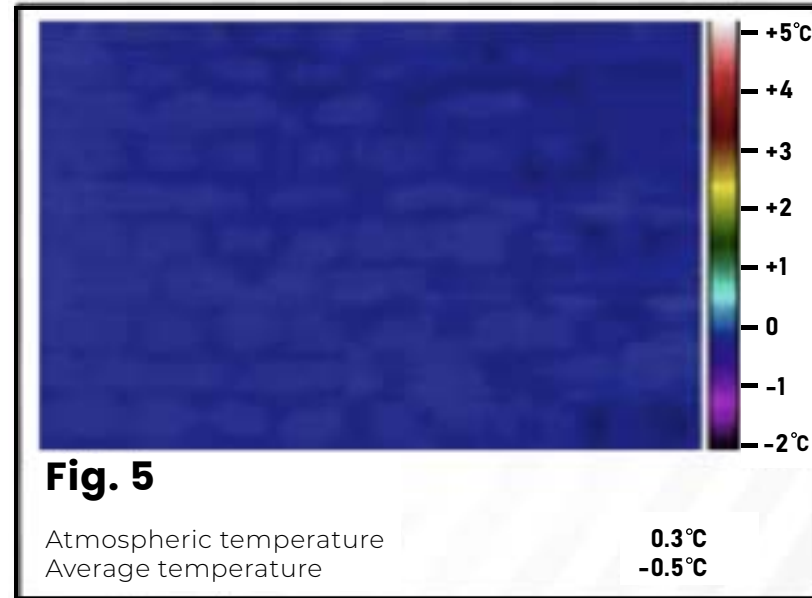
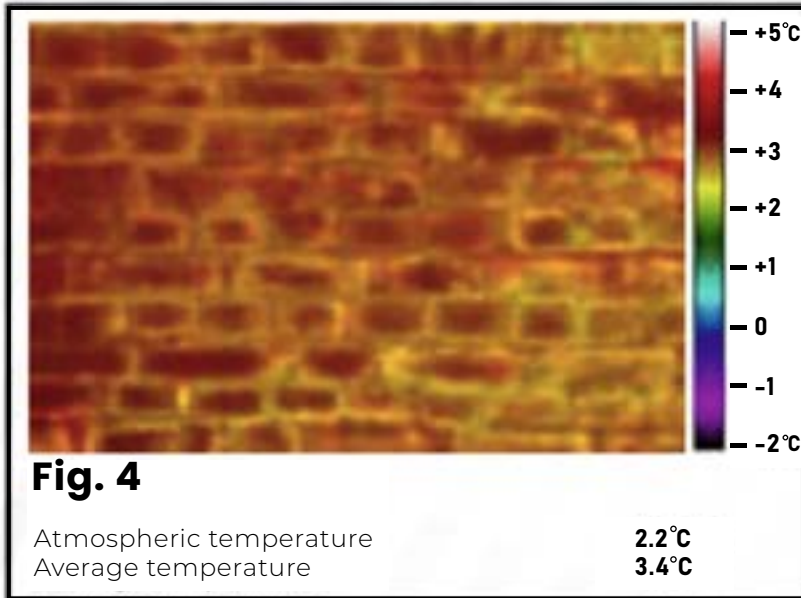
- Cement: Binds ingredients together; commonly Portland cement from limestone, clay.
- Aggregates: Provide bulk, strength; coarse (gravel, crushed stone), fine (sand).
- Water: Essential for cement hydration; affects workability, strength, durability.
- Admixtures: Modify properties; e.g., plasticizers for workability, accelerators, retarders, air-entraining agents.
- Supplementary Cementitious Materials (SCMs): Enhance performance, sustainability; e.g., fly ash, slag cement, silica fume.
- Proportions vary based on desired properties, environmental factors.
- Concrete mix designs tailored for specific applications: foundations, bridges, roads, decorative elements.

Logic Ex

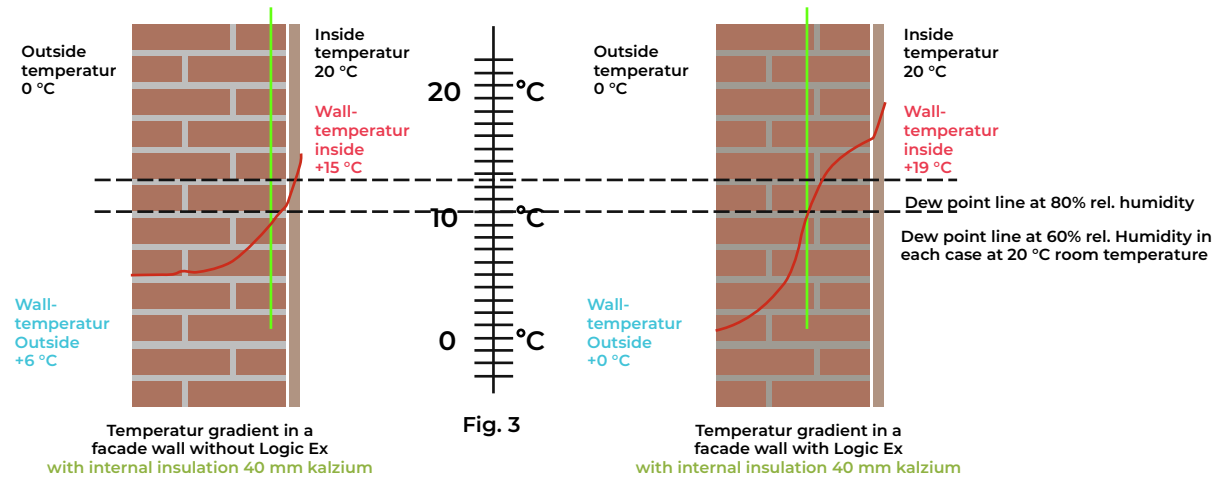
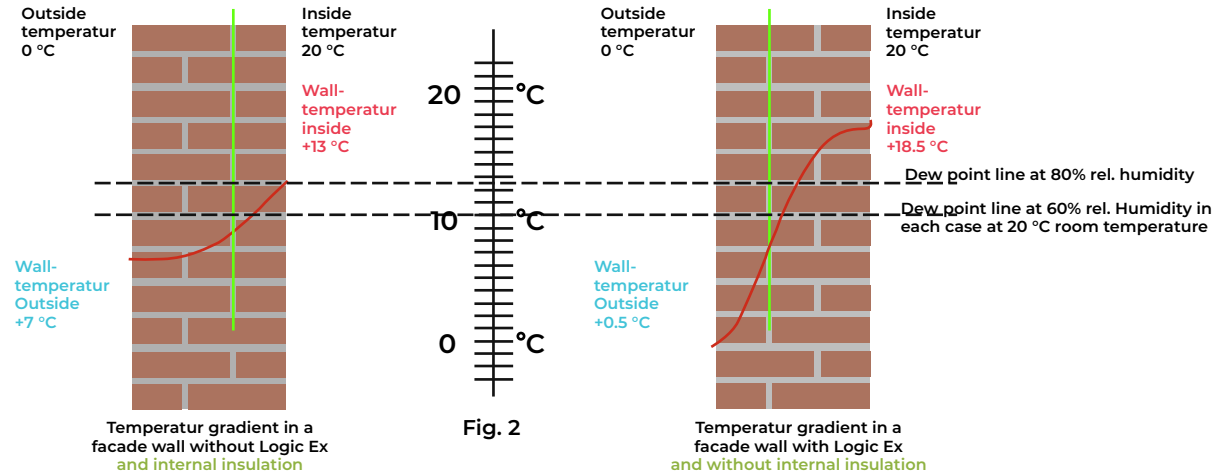
- Logic Ex: ideal for water-repellent treatment on exterior walls, floors, and rooftops.
- Convenient application by spray or brush with quick drying time (three hours).
- Unique technical composition penetrates deeply, becoming invisible.
- Repels water and dirt while maintaining air circulation.
- Water beads on the surface, providing dual benefits of 35% energy savings and a 15% increase in building value.
- Prevents dirt and water from entering pores, keeping surfaces clean.
- Enjoy a healthy living environment with up to 20 years of protection.
- Smart choice for long-lasting, efficient building maintenance.



Temperature differences after application with **Logic Ex**

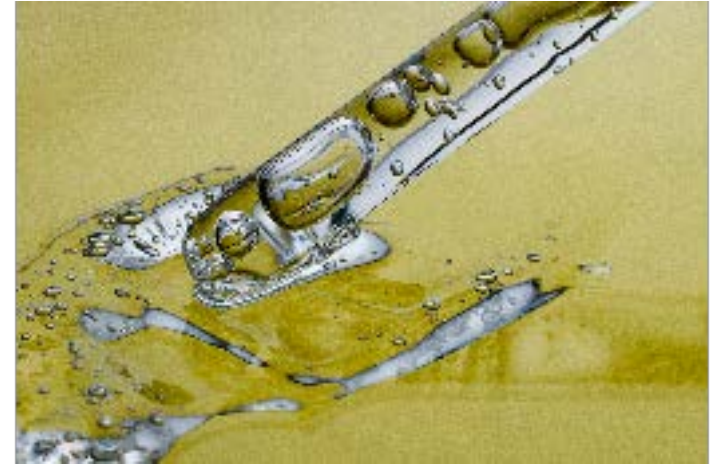


The best insulation



What are oleophobic coatings?

- Oleophobic coatings repel oils and oily substances, preventing fingerprints, smudges, and stains.
- They alter surface properties, creating a barrier that prevents oil molecules from sticking.
- Key characteristics include oil repellency, easy cleaning, scratch resistance, and transparency.
- They are widely used in electronics, automotive, and household products.
- Offer an effective solution for maintaining clean and smudge-free surfaces, improving aesthetics and ease of maintenance.



Logic S

- Not only Hydrophobic but also Oleophobic.
- invisible Protection, Eco-Friendly Surface Care
- Logic S: Ultimate solution for pristine surfaces and lasting protection
- Engineered for excellence: Cleans and coats, creating an undetectable shield
- Enhances air quality by keeping pores open for effective circulation
- Combats moisture, oils, chemicals, and microbial threats
- Made from eco-conscious, bio-based materials for environmental stewardship
- Suitable for indoor and outdoor and indoor settings settings: terraces, balconies, rooftops and floors
- 20-year durability guarantee attests to superior performance



After



Before

What are Nano-epoxy coatings?

- Nano-epoxy coatings combine epoxy resins with nano-sized particles for enhanced performance.
- Nanoparticles improve mechanical strength, abrasion resistance, and adhesion.
- Enhanced chemical resistance to corrosion, solvents, acids, and alkalis.
- Create a dense barrier layer, blocking moisture, gases, and other harmful substances.
- Achieve similar or better performance with thinner application layers, reducing material usage.
- Tailored surface properties include hydrophobicity, oleophobicity, or antimicrobial activity.
- Applications in aerospace, automotive, marine, construction, and electronics industries.
- Used for corrosion protection, wear resistance, anti-fouling, and surface decoration.
- Versatile and high-performance solution for enhancing durability and functionality.



Logic DP

- Logic DP is an impregnation method that shields against carbon dioxide and chloride from the air.
- Protects against moisture penetration by deeply penetrating the concrete.
- Application of Logic DP results in concrete becoming 20 times stronger.
- Technical composition defends concrete against water, mineral oil, solvents, acids, salt, combustion gases, and pressure.
- Colorless coating with preventive action against corrosion and rust formation.
- Reinforces concrete, preventing damage and cracks.
- Resistant to expansion of rust spots, preventing concrete cracks.
- Halts penetration of moisture, providing 20 years of protection.



Before



After





Logic DS

Logic DS is a two-component epoxy-based coating.

Shields concrete against carbon dioxide and chloride from the air.

Provides water-repellent effect, preventing moisture ingress into concrete.

Technical composition enables deep penetration into concrete pores, ensuring long-term protection. Can be produced in any color based on RAL code.

Has a preventive effect against corrosion and rust formation in concrete.

Prevents damage and cracks in concrete.

Resistant to the expansion of rust spots, preventing concrete cracks.

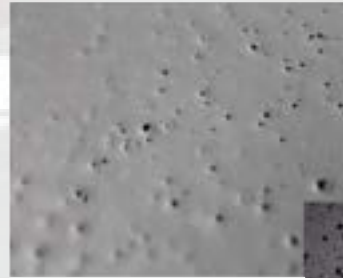
Stops the penetration of moisture, offering 20 years of protection.

Includes a 10-year guarantee on the paint (color).



Difference with what's on the market

- Normal Epoxy paint looks good in the beginning.
- Doesn't penetrate enough, lays as a layer on top of the concrete.
- Lasts 2-3 years before spots occur.



Recently applied



After some month



After one year

-
- Polyurea coatings are more suitable for rooftops.
 - Problem occur during the application.
 - Molecule particles of the ingredients vary in sizes.
 - While applying the coating the molecules separate leaving a non stable coating.
 - Approximate 5 year durability



LOGIC
CHEMIE